



I'm Thinking  
Orchards!





Orchards Children's Services is uniquely effective in serving children and families throughout our region. We provide hope, access and support to people of all ages. Our thoughtful planning, innovative approaches and committed leadership all speak to an organization that cares – about people, about our communities, and about our future. The recognition we've received – from those we serve as well as from independent sources – is a testament to those we help, and those helping us. When you want to experience excellence in caring...*Think Orchards!*

## TABLE OF CONTENTS

2	.....	Leadership Message
3	.....	Excellence in Caring
4	.....	Preventing Child Abuse and Neglect
5	.....	Foster Care and Adoption
6	.....	Education and Leadership
7	.....	Health and Basic Needs
8	.....	A Regional Response
11	.....	Events
13	.....	A History of Champions
15	.....	Board of Directors
18	.....	Finance
19	.....	Partners and Advocates
20	.....	Donors

## LEADERSHIP MESSAGE



2010 was an incredible year for some incredible people. And that's really the core of our message. In the pages that follow, you'll see statistics, read stories and see photos designed to give you a sense of what makes Orchards uniquely effective. We take pride in our accomplishments, and we've weathered some mighty storms, socially and economically. But we never forget, and would be remiss if we didn't remind you – our supporters and advocates – that what makes Orchards special is its people.

When you read the statistics on pages 4-7, make sure to take special note of the fact that on any given day we were caring for over 600 young people. Over the course of the year, we helped over 1,300 families stay together. But beyond the sheer number of people touched by Orchards, we take particular pride in the way we helped them. Kids spending less time in foster homes, being connected more quickly and more enduringly to adoptive parents, families being guided to self-sufficiency by recognizing and summoning their intrinsic strengths and values.

When you read the stories on page 8, consider how Orchards' employees serve as the catalysts for truly amazing changes. Humble, committed and highly skilled, their efforts transcend job descriptions and performance mandates. Their service extends beyond Orchards to the broader community. From the foundation of meeting basic needs – food, clothing, transportation, and housing – they help families transform their futures by establishing family stability, and supporting activities targeted to education, employment and wellness.

When you see the photos throughout this report, take a moment to reflect on how you've helped to create those moments, to fulfill the unspoken promise that all of us make to children everywhere, and to how essential your continuing help is. Every success story serves as a reminder of those children and families still striving to experience that feeling of independence, self-sufficiency and belonging. We remain here to serve them, and remain committed to our path of not simply meeting expectations, but of opening every door, extending every hand and hurdling every barrier that stands in the way of a child's safety and happiness.

As we look back on a year of success, we look forward to the opportunities that lie before us to help in the uniquely effective way that only Orchards – and you – can.



*Carol Klein  
Chairperson*



*Michael E. Williams  
President and CEO*



## What Agency Sets the Standard For Excellence in Caring for Children and Families?

*I'm Thinking  
Orchards!*

Our commitment to expanding kids' horizons was recognized by Art Van Furniture who provided \$50,000 in funding for the Horizon's Program – the umbrella program for Learn-2-Learn, Summer Adventures and Mission: Transition. This year we were recognized as a Detroit Free Press Top Workplaces honoree thanks to our employees. As the President of the Association of Accredited Child and Family Agencies, Orchards' CEO Michael Williams has charted a course of advocacy and collaboration that has strengthened the entire sector. Our quality assurance initiatives yielded expedited status (an honor reserved for fewer than 28% of accredited agencies) by the national Council on Accreditation.



**Detroit Free Press**



# Preventing Child Abuse and Neglect?

*I'm Thinking  
Orchards!*



OUR PREVENTION AND  
FAMILY SUPPORT  
PROGRAMS SERVED 1,310  
FAMILIES ACROSS THE  
FOLLOWING COUNTIES:

Wayne  
336 families

Washtenaw  
101 families

Shiawassee  
28 families

Oakland  
233 families

Macomb  
282 families

Genesee  
330 families

For over a decade, we have dedicated ourselves to the concept of Family Preservation. This preventive approach helps families stay together while remaining committed to the safety and well being of children. We have developed programs throughout southeast Michigan that serve families by helping them access resources and overcome challenges, and not only keep the family intact but put them on a path to long-term stability and self-sufficiency.

Follow-up visits three, six and twelve months after receiving services provided confirmation and assurance that **the children in 95% of the families Orchards served were able to safely and supportively remain in their parents care.**



Most people who know us recognize us as a foster care and adoption agency and clearly these are the services that “put us on the map.” We recruit, train and license hundreds of foster families every year, and we connect hundreds of kids each year with these caring families. Supporting outreach with preparation and establishing expectations for foster families sets us apart. Many of our foster families go on to adopt the children they are connected to through the foster care experience.

**We cared for an average of 391 youth each day over the last year in our foster care programs.**

**We successfully recruited 98 new individuals and families to serve as foster and potential adoptive families.**

**We monitored and supported parents’ efforts to reconnect with their children and returned 148 youth to their parents’ care.**

**In adoption, we served 323 children and facilitated 112 completed adoptions.**

**2010 marked the completion of our 3,000th adoption since beginning to provide this service in 1986.**

**ADOPTIONS  
WERE COMPLETED  
IN THE  
FOLLOWING  
COUNTIES:**

Wayne  
51 families  
Washtenaw  
8 families  
St Clair  
14 families  
Oakland  
22 families  
Macomb  
11 families  
Genesee  
3 families  
Other  
3 families



## Improving Educational Performance?

*I'm Thinking  
Orchards!*

We are committed to supporting youth in their educational pursuits. Over 95% of the eligible youth served by our agency graduated high school. We offer volunteer early childhood reading programs in our activities center where youth are able to take home the book that is read to them. Our Learn-2-Learn Study Skills program has expanded to serve nine schools and over 220 youth, demonstrating a 27% increase in participants' knowledge of study skills. We conducted eleven college tours, exposing over 100 young people to accessible post-secondary options. Our Mission: Transition program helped over 41 youth apply for college and financial aid. Lastly, our annual Back-To-School Backpack Giveaway provided 250 young people with new backpacks filled with supplies, leading them into the school year confident and prepared.



## Empowering Youth through Leadership?

*I'm Thinking  
Orchards!*

Begun in 2006, Orchards Youth Board has grown to include 21 young people of varying ages from varying backgrounds. From participation in our annual Champions for Children award ceremony to preparing take-home meals for families at the holidays, the youth board's efforts are an essential resource. We also provide meaningful experiential opportunities for the group and offer workshops on social and cultural issues facing our region and the world.





## Keeping Kids Healthy? *I'm Thinking Orchards!*

As with our other services, we blend the concepts of prevention and intervention to provide diverse opportunities for our young people to stay active, engaged and healthy. Our Summer Adventures Program provides creative outlets, experiential education and structured events that keep kids active during the summer. Our co-sponsorship of the Detroit Youth Baseball League provides over 1,400 kids every year the opportunity to play baseball in safe, clean environments supported by committed volunteer coaches. Our Food First program teaches kids and families how to shop, cook and eat healthy. The My Smile Matters program puts funding from the Jewish Fund to work helping kids access orthodontic services. And our annual Olympics and Bike Giveaway Celebration gives our young people both immediate and enduring opportunities to get out and get active.

Children in our care attended 229 day-camp sessions and 77 overnight camp visits thanks to funding provided by the Summer Adventures Steering Committee. 1,400 youth participated in the Detroit Youth Baseball League (co-sponsored by Orchards in collaboration with Think Detroit/PAL) and over 60 youth played in the regional finals in Cincinnati. Over 1,000 people came out for the Orchards Olympics and generous donations from Kroger and Ruth and Howard Berrey allowed 250 children served by Orchards to take home shiny new bikes. Seven young people received orthodontic care at steeply discounted prices.



## Meeting Basic Needs? *I'm Thinking Orchards!*

Orchards helped over 100 families stay in their homes by assisting with utility and rental payments, and through the provision of appliances and beds. We had 19 families engaged in our year-round Adopt-a-Family program providing donations to help with seasonal clothing and school needs. We assembled and distributed 250 food baskets for families at Thanksgiving, and delivered over 2,400 toys to 300 children during the Christmas season. Our Clothing Corner distributed over 3,000 items to the families we serve.





## A Regional Response



### WAYNE



This past fall, our Detroit/Wayne County programs provided that simple but strategic support that made the profound difference between comfort and chaos. The father of a family of eight was laid off in October from a long-standing job, his employer one of many challenged to stay in business in our present economy. The family struggled to pay their rent and other bills, and was facing an eviction as the holidays approached. Their circumstances raised the possibility of having to split up their family to stay with two separate relatives. One of their children is autistic, and the impending separation tested the family's emotional strength as it threatened to undermine the autistic child's need for daily routine and stability. Recognizing the urgency of the situation, Orchards' staff worked together as a team to mobilize the family's support network of family and friends to help bring outstanding bills up to date. They advocated successfully with the landlord and accessed funds provided by donors to support clients' basic needs. And they accompanied the father to a job fair that, after considerable exploration and effort, ultimately yielded a new job.

The family celebrated the holidays in their home thanks to their determination and the guidance and support of our dedicated staff and supporters.

### WASHTENAW



Latania Hall is a single mother of 6 children ages 6 months to 13 years old. Ms. Hall is a hard worker limited to part time hours at minimum wage due in part to her role as a parent. Simply making ends meet is an ongoing struggle for her. In addition to basic needs and transportation, Ms. Hall also needed help supporting her kids in school.

Ms. Hall loves and is devoted to her children, but she lacked a support system that would help relieve the stress of raising and caring for her family. Most parents can relate to the stressors that some times add to the challenges of raising kids. In Washtenaw, our Removal Prevention Early Return (RPER) program works with parents to manage the many responsibilities that can sometimes converge to become overwhelming. RPER worker Margo Williams helped to fill the support system gap for Ms. Hall as they worked to understand each of the family member's needs and develop a plan of action.

In a few short weeks, Margo helped Ms. Hall identify priorities, create a manageable budget to meet those needs, connect with community resources to bridge gaps, and set up tutoring and supportive services with her children's schools to help them academically. Orchards will provide ongoing support for basic needs through our partnership with Food Gatherers in Ann Arbor.

Ms. Hall was extremely grateful saying "If it had not been for Margo (and Orchards), I would not have been able to give my children what they need. They got everything they wanted and I am so happy! I thank God for bringing this service into my life right at the right time."



## A Regional Response

### OAKLAND



Cinnamon McBride is an 18 year old African American female participating in our Independent Living Program. In early 2010, Cinnamon was at risk of not graduating high school due to several different altercations with peers in school and a suspension for negative behavior towards her teachers and peers. She resolved to change. She felt like her current living arrangement was not providing the support and structure she needed, so she went out and identified a home she felt would work for her and worked with Orchards to make this her new home. Cinnamon also met a woman that was interested in becoming her mentor and assisted the woman in becoming her mentor.

She received her high school diploma in August 2010 after successfully completing summer school, testing out of one class, and taking several online classes at one time. She applied for classes at Washtenaw Community College and began attending in January. Cinnamon was hired at Wal-Mart in Hartland and works 36 hours per week. She recently passed her road test, received her driver's license and through work is saving money to purchase a car.

In short, Cinnamon has grown to become a mature, responsible young adult, supported by her worker, home provider, and mentor. She is working, attending school, and demonstrating independence and the discipline to budget and save. She knows how to advocate for herself and has developed the communication and coping skills that allow her to express her feelings appropriately. In all these things, she stands as a testament to what can be achieved when focus and determination meet support and genuine caring.

### GENESEE



"Don't let the limits of your imagination block you from what God can do for you."

– Anonymous

Ms. Reed and her son, Cedric, were referred to Orchards' Genesee County Families First program in November 2010. In 2005, while struggling with substance abuse issues, Ms. Reed had turned custody of Cedric over to his father. As Ms. Reed continued to battle her addictions, Cedric grew to become a young man. In 2007, Ms. Reed began her journey to sobriety and, during a scheduled supervised visit, Ms. Reed discovered that Cedric was being physically abused by his father. Ms. Reed was determined to protect her son and filed for temporary custody to bring him back to Genesee County. The fact that she had not had custody of Cedric for five years did not deter her. She was determined to keep her son safe. Throughout her participation with the Families First program, Ms. Reed remained very proactive. She advocated for herself and her son, attended every scheduled visit and worked diligently and successfully to reconnect with her family. There were times when she became overwhelmed with the adjustment to full-time parenting, but with the support and encouragement of her Families First worker, Recalia Miller, she pushed on and completed the program successfully. Ms. Reed is a strong, dedicated and passionate woman who has overcome many obstacles. She has remained substance free for three years and is eager to pursue a degree in social work with a goal of helping others overcome substance abuse. Ms. Reed has learned to see life through Cedric's eyes and is learning to manage her feelings and use healthy coping mechanisms. Ms. Reed states, "Some of us do make it, I hope your program continues to flourish for the sake of the children."





# MACOMB



The holidays are a time of generosity, and staff in Macomb's Family Reunification Program experienced giving in all its many forms this past season. Melissa and Brianne began working at Orchards in the fall, and when they encountered a family in the community interested in adopting a family being served by Orchards, they welcomed the chance to make this connection. They identified a single mother of two girls who had recently been laid off and was struggling financially. During a recent visit, the mother had expressed her sadness and discouragement at not being able to provide Christmas gifts for her girls. "Here's these two wonderful, smart children who deserve all the toys Santa can fit on his sleigh and I can barely afford to feed us, let alone buy them any toys."

Melissa and Brianne played Santa's elves and delivered the gifts to an overwhelmed and incredibly appreciative family. When Mom saw presents with her name on them that said "wait until Christmas" she laughed, remarking that "Whoever adopted us must know me because I can never wait until Christmas!"

And with that, she promptly opened one of her gifts – a coat that she quickly put on. She noted the cleaning supplies and boxes of food interspersed with the beautifully wrapped gifts. When Melissa and Brianne handed her a gift card, she began to tear up and shared that she was especially grateful for this. "It wouldn't be right to have canned food or cereal for Christmas dinner, but that's what we were going to have." As she began to gather the gifts so she could hide them from her daughters until Christmas day, the workers asked if she wanted help. Tears falling down her cheeks, she pulled her new coat closer around her – "No, I just want to take my time and look at everything. Please let those people know how much this all means to us."

Gifts all around...

## Events

### NCJW

Throughout our existence, from our humble beginnings as a residential home for troubled boys to our present status as Michigan's premier resource for children and families overcoming the effects of poverty, abuse, and neglect, we have been guided and supported by the National Council of Jewish Women. Their vision, their commitment and their caring not only planted the seeds but has continued to nurture and sustain us as we have realigned our services to better respond to those in need.

In November of 2010, many of the women who were part of Orchards' inception in the 1960's gathered to reminisce and reflect. Captured on video, the meeting was a poignant, often whimsical dialogue offering a first-hand perspective on the early years of Orchards. Surrounded by a small audience of current staff members, the group's reflections evoked – in them and in all those listening – a profound sense of pride.



### OLYMPICS AND BIKE CELEBRATION

Orchards' Second Annual Olympics and Bike Giveaway celebration raised the bar once again for going the extra mile to support kids' success. With the support of Kroger, Howard and Ruth Berrey and DK Publishing, we were able to provide 250 kids with new bicycles, helmets and locks. This year, 73 volunteers helped with the assembly process, and we provided bikes for both younger youth and teenagers. Caregivers expressed their appreciation for giving kids the chance to get out, get active and experience that feeling of freedom that riding a bike can bring.



### BACKPACK GIVEAWAY

Orchards knows how to send kids back to school in style! Over 250 aspiring students received fully equipped backpacks courtesy of Detroit Piston Rodney Stuckey, Chubb Insurance Group and Kroger. When it's time to head back to school, Orchards knows that for many of the young people we're serving, it might mean arriving in class without the necessary supplies to support their efforts. With all the other challenges – schedules, moves to new schools, tough subjects and an overwhelmed system – we've remained committed to overcoming the economic barriers at the same time that we're helping them to "get back in the groove" of studying and learning. Supported by Hooper, Auto Motion, the Palace Patrol and the Pistons' Year-Round Hoops truck, our event sponsors helped us continue this meaningful tradition, and touched kids lives in a truly important way.





### A HIGH FIVE FOR THE HOLIDAYS

When Lion's quarterback Drew Stanton decided to launch his foundation, he couldn't have come up with a more appropriate name. Supported by friends and fellow players, Stanton's High Five Foundation helped Orchards "kick off" the holiday season with key support for our kids and families at a critical time of year. In November, Pizzeria Biga in Southfield partnered with Stanton and notable friends Ndamukong Suh and Red Wings Jimmy Howard and Drew Miller. These star athletes donned some aprons and served up some of Biga's incredible pizza creations right at your table. They dished out more than pies, with over 1,000 patrons stopping by to show their support for High Five and Orchards.

Fast forward to December where Drew's High Five Foundation and Nate Burleson's Catch Foundation teamed up – along with nearly the entire Lions' roster – for some off-the-field "pride," escorting over 100 of Orchards' youth along Southfield Road to the Target just north of the agency offices. Youth were initially greeted by Santa Claus (former Pistons' star Don Reid) and given a snack before heading out. With the proceeds from the Biga event, High Five, Catch and their distinguished supporters treated kids and families to a Christmas shopping experience they'll not soon forget. The event raised over \$12,000 and every penny went directly to providing gifts and food for kids and families. Stanton reflected on the event saying he "learned firsthand what it really means to help others," thankful that he has "the ability to give back and make others' dreams come true." High Five to you, Drew! High Five to you.



### FOOD FIRST

Launched in the Spring of 2010, Food First exemplifies Orchards' commitment to bringing diverse audiences together, collaborating on behalf of kids and families. Born out of the vision of Board member Adrian Tonon, Food First reached out to Beaumont Hospital's Nutrition Department to craft an educational, interactive program that teaches families how to shop for and prepare healthy meals. Supporter and volunteer Aimee Kovan has provided the energy and engagement to connect visitors in our activity center to the program's delectable dishes, and supplies from Chipotle Grill always lend to healthy and tasty offerings.



# A History of Champions



Taylor Segue and  
Michael Williams

DEDICATED



Marquise Slay, Renee DeVivo, awardees Ed  
and Carol Brandenstein and Michael Williams



The Gershon Family

THOUGHTFUL



Former State  
Rep Dudley Spade  
(2008)



Trudy Duncombe and  
Dennis Archer with  
Shirley Davis (2008)

WARM  
HEARTED



Robert Bobb





Nedda Barbat, Steven J Schwartz, Dennis Sampier and Anne Balutowicz (Detroit Pistons), the Davidson family (2007)



First Presbyterian Church of Birmingham



PASSIONATE



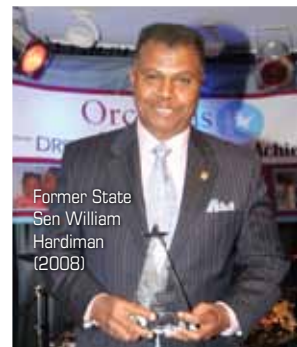
CARING



Rochelle Riley



Project 2000



Former State Sen William Hardiman (2008)



Gloria Bettis, Michael Williams, Jerome Bettis' parents and Skillman Foundation CEO Carol Goss (2006)



STRONG



LOVING



Senator George Cushingberry



2005 Champions – CEO Michael Williams, Emcee Carolyn Clifford, Allen Einstein, Michael Quinn (Pepsi) and Brian O'Keefe (Sergei Federov Foundation) (2005)



Cathy Cantor, Barbara Mayer, and Sallie Schottenfels (NCJW) pose with Michael Williams



DEVOTED



Deb Scola (Free Press Summer Dreams)



Paul Jenkins Jr from MIG Detroit (2008)

## A commitment to excellence. A vision for the future.

### CAROL KLEIN, CHAIRPERSON

Board tenure: 21 years

**Background:** The consummate advocate, Carol has been active in children's and women's issues for virtually all of her life. Carol's involvement with Orchards dates back to her childhood when her mother, Dora Lee Goldman, was instrumental in helping to found the organization.

**Unique contribution:** Carol helped launch the Orchards' Youth Board and has been the driving force behind Orchards' Summer Adventures program, leading a steering committee that has raised over \$500,000 and provided over 1,600 kids with experiential educational opportunities.



### DAVID KRAMER, VICE CHAIR

Board tenure: 7 years

**Background:** David is a highly regarded executive who is active politically and philanthropically. Recognized by Crain's in 2010 for their "40 under 40" designation, David's background as a former attorney, his success at Oswald Companies and his service to the community speak to his professionalism, integrity and character.

**Unique contribution:** David has been the architect of Orchards rewarding relationship with the Oswald Companies, and is presently chairing the agency's efforts around reconfiguring facilities to better meet the needs of kids and families.



### STEVEN J SCHWARTZ, TREASURER

Board tenure: 18 years

**Background:** Steve is a senior shareholder and corporate treasurer at Sommers Schwartz PC in Southfield, MI. He has been listed in Best Lawyers in America since 2007, specializing in business transactional practice and tax.

**Unique contribution:** A past Chair, Steve has guided Orchards successful navigation of fiscal challenges and enhanced the quality and transparency of internal financial reporting.



### DIANNA RONAN, SECRETARY

Board tenure: 4 years

**Background:** Dianna is the Vice President of Finance for Health Alliance Plan (HAP) where she has served for over eight years. Dianna is a CPA with over 26 years of leadership experience in non-profit healthcare including responsibility for internal audit functions, corporate and IRS compliance and overall financial accounting functions. She has served on several non-profit boards including United Way of Kalamazoo and the Kensington Valley Hockey Association

**Unique contribution:** Dianna's expertise has been an invaluable resource in our governance and compliance areas, assisting with policy formulation and external reporting.



### SHIRLEY BRYANT, IMMEDIATE PAST CHAIR

Board tenure: 14 years

**Background:** Shirley is the agency's immediate past chair. A well-recognized and respected community leader, Shirley is a Trustee for Oakland Community College and formerly served as the Director of Public/Community Relations for Birmingham Public Schools.

**Unique contribution:** Shirley led Orchards most recent strategic planning efforts resulting in the most significant programmatic and geographic expansion in the agency's history.





**LORETTA POLISH, PH. D.**

Board tenure: 21 years

**Background:** Loretta is a psychologist in private practice in Southfield and a frequent area speaker on "Parenting Your Grown Children."

**Unique contribution:** As the Chair of our Governance Committee, Loretta has stimulated meaningful dialogue and created an environment of thoughtful creation of policies that have led to greater engagement and more effective Board participation at all levels.

**MICHAEL ADKINS**

Board tenure: 1 year

**Background:** Michael serves as the Michigan Branch Manager and Vice President for Chubb Insurance.

**Unique contribution:** Michael serves on the Signature Event Committee and is working with our leadership team to connect with new supporters.

**DREW BESONSON**

Board tenure: 1 year

**Background:** Drew is a Wealth Management Advisor for Northwestern Mutual Trust Company, and a former Supreme Court appointee to the State of Michigan Foster Care Review Board.

**Unique contribution:** Drew has been instrumental in guiding Orchards philanthropic strategy and engaging individuals as advocates.

**ALLEN EINSTEIN**

Board tenure: 19 years

**Background:** Allen is an educator and creator of Project 2000. Project 2000 was a successful program for at risk students in the Birmingham School District. He is also the official photographer for the Detroit Pistons.

**Unique contribution:** Allen has been instrumental in connecting the Pistons' organization with the Orchards. He has also contributed educational expertise to development of Orchards' Learn-2-Learn program.

**ADAM FORMAN**

Board tenure: 2 years

**Background:** Adam is a senior principal at Miller, Canfield, Paddock and Stone, PLLC in Detroit, Michigan. He has been listed as a Michigan Super Lawyer and in Best Lawyers in America since 2010 specializing in labor and employment law.

**Unique contribution:** Adam has promoted and supported the use of technology and social media in our community relations efforts.

**NATALIE GLASS**

Board tenure: 2 years

**Background:** Natalie Glass is a Senior Vice President- Director of Human Resources for TCF Bank.

**Unique contribution:** Bringing over 30 years of professional HR experience to Orchards Board, Natalie has contributed to our efforts to recruit, retain and reward our staff. She also chairs the selection sub-committee for our Champions for Children awards.

**BARBARA GOLDBERG**

Board tenure: 22 years

**Background:** Barbara is a retired social worker, an accomplished equestrian and a tireless advocate for children confronting physical, social and economic challenges.

**Unique Contribution:** Barbara is our longest serving board member, a former Chair and holds the distinguished honor of being the first recipient of the Gerald L Levin Champions for Children award.



### MAURA JUNG

**Board tenure:** 5 years

**Background:** Maura has held various positions in the field of environmental education and science education for most of her 26 year career. Maura has taught and worked with children of all ages, K-16 as well as graduate students. She is active in environmental education in the state, serving as co-chair for a State level environmental literacy-planning group, vice-president for the Southeast Michigan Land Conservancy and co-chair for the Friends of Bowers Farm.

**Unique contribution:** Maura brings her doctorate in educational leadership and policy to assist in planning board retreats and working on issues of policy through participation on Orchards Governance Committee. She also has been a foster and adoptive parent at Orchards.



### RANDIE LEVIN

**Board tenure:** 7 years

**Background:** Randie is a retired staff member of the Planning Department at the Jewish Federation of Metropolitan Detroit where she worked for 22 years. First introduced to Orchards as a graduate social work student, Randie was married to long-time Orchards CEO Jerry Levin.

**Unique contribution:** Randie's unique perspective helps ensure our institutional legacy, and her service on the Aging Out and Signature Event Committees has contributed to innovative responses for youth and for our supporters.



### MICHAEL QUINN

**Board tenure:** 6 years

**Background:** Michael recently celebrated his twenty-five year employment anniversary with Pepsi Beverages Company where he serves as the Director of Retail Sales, and he is board member of the Associated Food and Petroleum Dealers.

**Unique contribution:** Michael and his wife Kisha were among the first of Orchards supporters to host a "parlor meeting," inviting their friends to donate toys for the holidays and come learn more about how Orchards supports the community.



### SALLY SCHOTTENFELS

**Board tenure:** 6 years

**Background:** Sally is a social worker by education, and served as the chair for NCJW-Detroit Chapter from 1960-62, leading the organization during Orchards formative years.

**Unique contribution:** Sally has remained a steadfast advocate and helped maintain and expand our connection to NCJW.



### TAYLOR SEGUE

**Board tenure:** 20 years

**Background:** Taylor is a recognized expert in municipal law and commercial real estate and bond financing and a former Presidential appointee to the Board of Directors of Fannie Mae under the Bush administration.

**Unique contribution:** Under Taylor's Board Chairmanship, Orchards successfully recruited Michael E Williams to become the agency's fourth President and CEO.



### DENNIS SHERIDAN

**Board tenure:** 7 years

**Background:** Denny is a seasoned life insurance, employee benefits and financial planning professional and served as planned and major gifts officer for Starr Commonwealth and Oakland University.

**Unique contribution:** Denny chairs Orchards Fund Development Committee, serves on the Finance Committee, and was instrumental in the creation of the Governance Committee.



### ADRIAN TONON

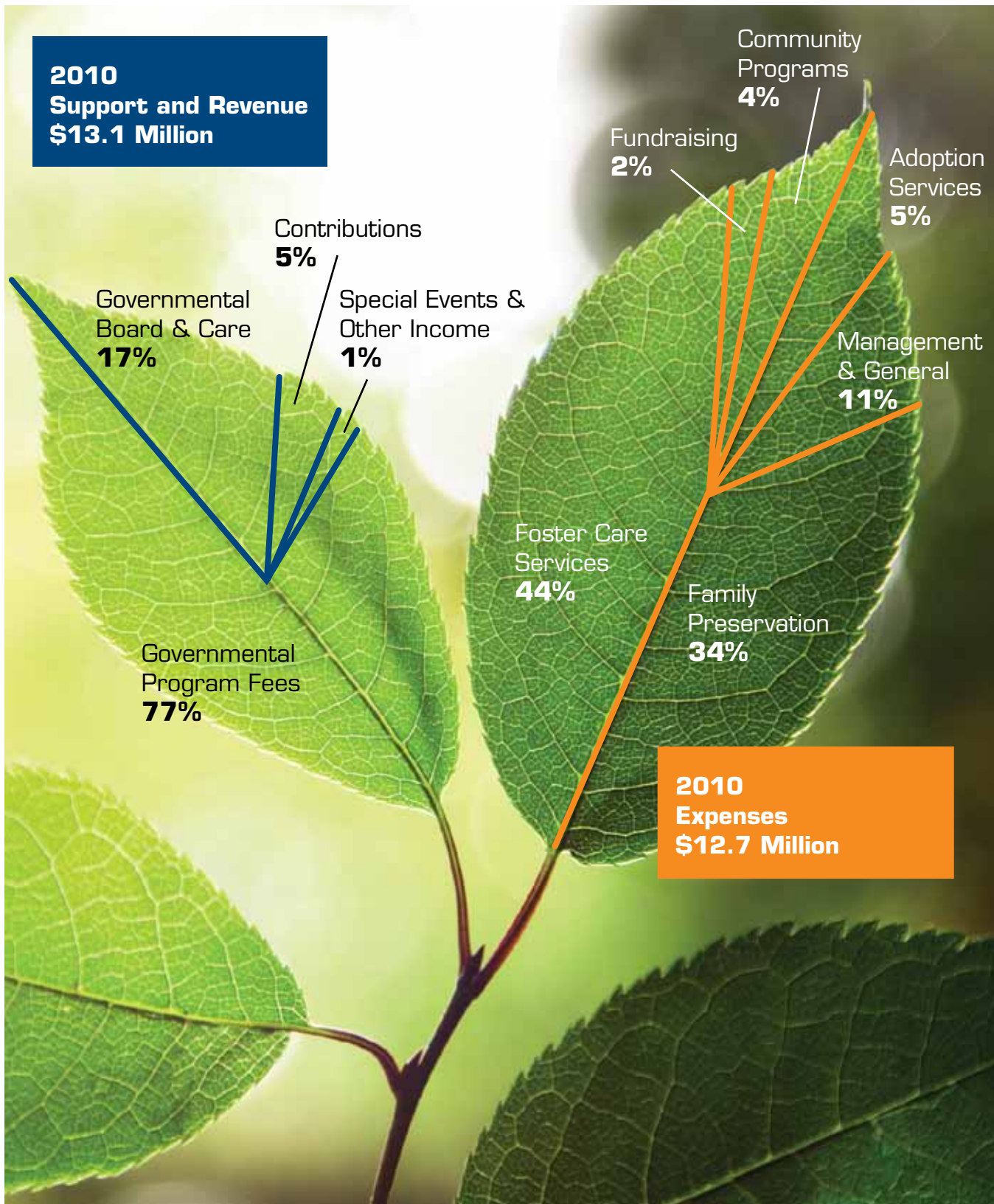
**Board tenure:** 3 years

**Background:** Adrian is the proprietor of Café Cortina in Farmington Hills, recognized by Zagat's as one of the world's top culinary destinations.

**Unique contribution:** Adrian has helped shape the lives of kids and families through interactive skill-building activities at his restaurant and through creation of the Food First program at Orchards.







## Partners



### ACCESS

Alliance for Children and Families  
 Association of Accredited Child and Family Agencies  
 AT&T  
 Beaumont Hospital Nutrition Department  
 Best Buy  
 Café Cortina  
 Children's Charities Coalition  
 Cloverlanes Bowl  
 Compassion Through Cameras  
 Council on Accreditation  
 Daly Merritt Insurance  
 Delta Sigma Theta Sorority Southfield Chapter  
 Dunkin Doughnuts (Greenfield/Oak Park)  
 Errol Service McDonald's  
 Feed the Children  
 First Presbyterian Church of Birmingham  
 Foodgatherers  
 Franklin Cider Mill  
 Gleaners  
 Greater Detroit Network of Social Innovators  
 Carrie Hall  
 Harvard Business School Leadership Collaborative  
 Honeybaked Ham  
 Jain Temple  
 J R Johnson  
 JVS  
 Kroger  
 Lone Pine Elementary  
 Meijer  
 Michigan Department of Human Services  
 Michigan Nonprofit Association  
 NEYIPC Adopt-a-Child  
 Northwest Activities Center  
 Pi Gamma Zeta Sorority Southfield Chapter  
 Prudential Insurance  
 Southwest Solutions  
 Staples  
 Starbucks  
 Andrea Stinson  
 University of Michigan Board Fellowship Program  
 Zoom Dezin

## Advocates



### Summer Adventures Steering Committee

Lisa Lis  
 Rena and Mark Lewis  
 Barbara and David Osher  
 Carol and Mitchell Klein  
 Debbie and John Steinberg  
 Lori and Doug Soifer  
 Preeti Venkataraman

### Legacy Advisors Group

Sonya Delley  
 George Fox  
 Irving Goldman  
 Latha Kannan, MD  
 Emmett Moten  
 Bea Rowe  
 Douglas Skrzyniarz

### NCJW Leadership Group

Dora Lee Goldman  
 Barbara Mayer  
 Sondra Nathan  
 Bea Rowe  
 Sally Schottenfels  
 Marsha Zucker

### Orchards Youth Board

Amritha Venkataraman,  
 Co-Chair  
 Myia Woodley-Sharrieff,  
 Co-Chair  
 Josh Adkins  
 Daniah Ballard  
 Bailey Begley  
 Anya Blumenfeld  
 Daniel Bohlender  
 Shyryn Borgol  
 Donovan Colquitt  
 Spencer Gold  
 Yamillies Jimenez  
 Max Kepes  
 Sydney Schaefer  
 Emanuel Swanson  
 Racheal Tiaston  
 Matthew Webster  
 Kyra Woodley

### Campaign Steering Committee

Michael Adkins  
 Drew Besonson  
 Deidre Bounds  
 Carolyn Clifford, Co-Chair  
 Michael Finney  
 Barbara Gattorn  
 Jay Hack  
 George Hedgespeth  
 Michael Pachuta  
 Roger Penske,  
 Honorary Chair  
 Joe Serra, Co-Chair  
 Taylor C Segue  
 Dennis Sheridan  
 Douglas Skrzyniarz  
 Willie Tabb  
 Sanjeev Venkataraman, MD





# List of Donors

\$100,000 +

Julie and Joseph Serra

\$50,000 - \$99,999

Art Van Furniture  
Joan Akers Binkow  
Detroit Auto Dealers Association CP  
Doris Lee and Irving Goldman  
Fred and Barbara Goldberg  
Summer Adventures Steering Committee

\$25,000 - \$49,999

DeRoy Testamentary Foundation

\$10,000 - \$24,999

Ally Financial  
Bank of America  
Drew Besonson  
Carmine DeVivo and Stephanie Smith  
Carol and Dr Mitchell Klein  
Charter One Foundation  
Children's Charities Coalition  
Detroit Free Press Charities Inc  
High Five...The Drew Stanton Foundation  
Kroger  
Panera Bread  
PNC Foundation

*Our  
Giving  
Tree*

# Our Giving Tree

## \$5,000 - \$9,999

Berkshire Middle School  
Lori and Robert Blumenfeld  
Catch Foundation  
Daly Merritt  
Filmer Memorial Charitable Trust  
First Foundation  
Alizah and Adam Forman  
Irving E and Doris L Goldman  
Foundation  
HAP  
Hilary Isakow  
Jewish Fund  
Raymond and Anna Johnson  
Foundation  
Jake Kasdan and Inara George  
Rosemary Leeb  
Leo Burnett Detroit  
Leo's Coney Island  
Randie Levin  
Miller, Canfield, Paddock and  
Stone PLC  
Morgan Stanley Foundation  
Dianna and Charles Ronan  
Serra Family Foundation  
Sue and Dennis Sheridan  
Lauri and Steven Solomon  
Rodney Stuckey  
TCF Bank  
Denice and Michael Williams

## \$2,500 - \$4,999

96.3 Stuff a Bus  
Michael Adkins  
Baker Tilly Virchow Krause LLP  
Janice Berry  
Chubb Group of Insurance Companies  
Jack, Evelyn and Richard Cole  
Family Foundation  
Atilio V Colella  
First Presbyterian Church  
of Birmingham  
Gift Planning Associates

Margo Gorchow  
Gilda Hauser  
Portia and George Hedgespeth  
Maura and Kurt Jung  
Clarence and Jack Himmel Foundation  
Kasdan Family Foundation  
Anessa and David Kramer  
National Council of Jewish Women  
Office Depot  
Loretta Polish PhD  
Ralph L and Winifred E Polk Foundation  
Kisha and Michael Quinn  
Rear Ends  
Bluma and Robert Schechter  
Katie Solomon and Michael Komorn  
Wabeek Country Club  
Ralph C Wilson Foundation  
Wolverine Human Services

## \$1,000 - \$2,499

Alliance Benefit Group of Michigan  
Amurcon Corporation  
Diana Ayres  
Pamela Ayres  
Marguerite Bell-Cook  
Ruth and Howard Berrey  
BI Worldwide  
Wendy Borovsky  
Shirley Bryant and Chuck Gosh  
Café Cortina  
Cloverlanes Bowling  
Compuware  
Geraldine Dortch  
Nanci and Allen Einstein  
Caryn Gallagher  
Michelle Gilbert  
Girl Scout Troop #2939  
Nancy and Lary Goldman  
Denise Goodman  
Ardis Greene  
Carrie Hall  
Scott Hamburger  
Alice Herman  
Dale Hollandsworth  
Linda and Arnold Jacob

JR Johnson  
Latha Kannan MD PC  
Doris Kashtan  
Harvey and Aileen Kleiman  
Family Foundation  
Aimee and Rick Kovan  
Bill Krall  
Rick Kress  
Lassie Lewis  
Meredith Lewis  
LSG Insurance Partners  
Eileen Martinez  
Michel-Rodecker Endowment Fund  
Candice and Michael Mihalich  
Brigitte Newmann and Reinhard Pusch  
Barbara and David Osher  
Palace Sports and Entertainment  
Nancy Paley  
Patton Holdings  
Lee and Maxine Peck Foundation  
Pepsi Bottling Group  
Prudential  
Robyn and Dale Rands  
Rogvov Architects PC  
Sigmund and Sophie Rohlik Foundation  
Ronna Ross and Steven Schwartz  
Martie and Bob Sachs  
Barb Seidel  
Sommers Schwartz PC  
Spectrum Human Services  
Adrian Tonon  
Tupper Enterprises LLC  
Variety The Children's Charity  
Dr Preeti and Sanjeev S Venkataraman  
Allison Weinstein  
Zingerman's Service Network



## \$0 - \$999

1st Michigan Colonial Fife and Drum Corps  
Patti Aaron  
ABT Consulting Group LLC  
Judith and Joel Adelman  
Faye and Steve Adelson  
Judith and Joshua Adler  
Cheryl D Ajamu  
Ajamu Group LLC  
Cynthia Aks  
Lynn and Jeff Aleman  
Anita Allen  
Christine Allen and Family  
Jane and Scott Allen  
Alpha Delta Pi Sorority  
Diane and Alan Amendt  
Virginia Amon  
AMW Design LLC  
Susan Kalman Andersen  
Andover Forensic Boosters  
Edie and Steve Arbit  
Aronoff Foundation  
Joanne and Daniel Aronovitz  
Herbert Aronsson  
Arts Place  
Diane Ash  
James Ashby  
Gary Astrein  
AT&T  
Stephany and Dr James Austin  
Automotive Components Holdings LLC  
Cindy Babcock  
Kellie Bagnick  
Donna and Peter Bahner  
Jennifer and Curtis Bailey  
Patricia Baly  
Mari Barnett  
Arlene and Jerry Baronick  
Suzanne and Fred Bartholomew  
Preetly Bartusek  
Donna and Jack Belen  
Belicoso Martini Cigar Bar  
Marilyn Bellomo  
Nancy and Mark Bennett  
Lois and Robert Benson  
Lorelei and Seth Berg  
Barbara and Alan Berlin  
Hadas and Dennis Bernard  
Martha and Phil Berry  
Millicent Berry

Berry Foundation  
Best Buy  
Beverly Hills Grill  
Christopher and Rebecca Bibbs  
Valerie Bielski  
Bienenstock Court Reporting and Video  
Jason Bierlein  
Vicky Bills  
Birmingham Rotary Club  
Endowment Fund  
Susan and Dr Sanford Birnholtz  
Phillip L Bittker Foundation  
Black Family Development  
Janet and James Blanchard  
Carla Bland  
Carey and Ryan Bloom  
Blue Cross Blue Shield of Michigan  
Theresa and Dr Rob Blum  
Elaine and Mark Blumenfeld  
Nancy and Lawrence Bluth  
Robert Bobb  
Sharmon and Chad Bordeau  
Honorable Paul D Borman  
Ina L and Keith Bornstein  
Marlene Bowman  
Karen and Ralph J Boyk  
BPS Community Councils  
Marsha Bradshaw  
Roberta and James Brandstatter  
Faith and Jeff Brasch  
Lisa and Michael Brennan  
Engle and Eric Bridges  
Marina and Mike Brock  
Stacy and Jeffrey Brodsky  
Helene Deon and Charles Brown  
Jennifer Brown  
Tahya Brown  
Veda Brown  
William Brukoff  
Vince Brumfield  
Heather Buckley  
Carole and Thomas Bunting  
Gayle and Richard J Burstein  
Karen and Mark Burstein  
Lauren Buys  
Marquisha Byas  
Carol Calahan  
Dr Nancy Calley  
Jennifer Camilleri  
Anne Capling  
Care Managers Inc  
Carl's Golfland

Kim and Timothy Carney  
Carrie Hall Photography  
Michelle and David Carroll  
Reneé Carroll  
Gia Cartwright  
Cass Elementary School  
Catherine Cato  
Richard Cavalier  
Cbeyond  
Centurion Insurance Agency  
Ceresnie and Offen Fur Group  
Charles R Brown N A B A Division of Firms  
Roberta and Dr Dale Charnas  
Charter One Bank  
Molly and Aaron Chernow  
Kim and Richard Chesbrough  
Ryan Chism  
Elaine Gayle Chottiner  
Christian Fellowship of Love  
Baptist Church  
Ciber  
Citizens Republic Bancorp  
Amanda Clark  
Valerie and Robert Clark  
Carolyn Clifford-Taylor  
ClubCorp Charities  
Robyn Coden  
Lois and Avern Cohn  
Lori and Mark Cohn  
Colgate Palmolive  
Sara Collins  
Sonya Collins  
Debbie and Andy Colman  
Community House  
Congregation Shir Tikvah  
Constance W Jacob Trust  
Mark Cooper  
Laura Costillo  
Crazy Joe's Tanning Salon  
Jane and James Cullen  
Cupcake Station  
Asmaa and Mazin Dado  
John Daly  
Nancy Dano  
Data Management Payroll Services  
Barbara Davis  
Denise and Dr David Davis  
Lauralee Davis  
Randy Dean  
Laurie Dean-Amir  
Delta Sigma Sorority  
Donna Deska

# Our Giving Tree

Detroit Community Health Connection  
Detroit Red Wings Alumni Association  
Detroit Red Wings Foundation  
Detroit Tigers Foundation  
Detroit Zoo  
Ashley Dickinson  
Gregory Didierjean  
Rosalie and Charles Disner  
Dorian Divita  
DK Custom Publishing  
Sarah Doak  
Gerri Dolan  
Domino's Pizza  
Don Bosco Hall  
Joyce and Kenneth Donaldson  
Laura Donker  
Doreen N Hermelin Trust  
Jordan Dortman  
Mark Drane  
Jean and Howard Dubin  
Melissa and Stephen Duke  
Gary Dunlap Jr  
Jan and Dr Marc Dunn  
Dunn Laboratories  
Eagles Nest Montessori  
Echo Park Learning Center Cub Scouts  
Eden Foods  
Pamela and Franz Edson  
Rebecca Eichelberg  
Robin and Leo Eisenberg  
Uchechi Ejelonu  
Laverne Eland  
Elayne Gross Photography  
Sheryl Ellenstein  
Steffany Ellenstein  
Kim and Walter Elliott  
David and Edith Emerman Foundation  
Emile Salon and Spa  
Ilene Emmer  
English Gardens  
Beth and Earle Erman  
Esquire Deposition Services LLC  
Steven Estelle  
Susan and Burton Farbman  
Farmington Family Physicians  
FedEx Office Print and Ship Services  
Aaron Feiner  
Kellie Felgner  
Robin and Michael Fenberg  
Lisa Fenkell  
Susan and Richard Fenster  
Jeffrey Ferguson  
Fernco Inc

Lisa and Paul Finger  
Derek Finley  
Dr Julie Finn and Bradley Rowens  
Jami L Fitzgerald  
Fleming's Prime Steakhouse and  
Wine Bar  
Teresa and Darryl Folden  
Elaine Fontana  
Sheila Fontana  
Forensic Medical Advisory Service  
Linda Forman  
Kimberlyn Fortino  
Paula Fortino and Douglas Denney  
Trudy J Fortino  
Michelle Fournier  
Joan and George Fox  
Beverly and David Frank  
Frankel Jewish Academy  
Karen Freedman and Roger Weisberg  
Audrie Friedman  
Aviva and Dean Friedman  
Donna and Randolph Friedman  
Pamela and Michael Friedman  
G and B Electrical  
Jason Geisz  
Gem Century Theater  
Marie Gemmel  
Marcia Gershenson  
Ken Gillotte  
Nicole Gilmer  
Patrick Gilsdorf  
Carolyn Ginn  
David Girson  
Natalie and Lawrence Glass  
Howard Glazer  
Oliver Glenn  
Global Team Solutions LLC  
Timothy Godin  
Kathy and Tom Goldberg  
Marilyn and Dr Darryl Goldberg  
Miriam and Mark Goldberg  
Barbara and David Goldburg  
Carole and Howard Goldsmith  
Dr Sonia Gonte  
Kim Goodrow  
Gale and George Gordon Jr  
Gordon Advisors PC  
Angela and Sean Gouda  
Barbara and Dr Arnold Grant  
Janet and Todd Grant  
Barb Green  
Elisa and Ned Greenberg  
Illana and Daniel Greenberg

Joan and Allen Greenfield  
Greenstone's Fine Jewelry  
Nancy and James Grosfeld  
Grosfeld Foundation  
Elayne Gross  
Myra and Bernard Gross  
Frances Grossman  
Leslie and Brian Guerin  
David Guz  
Jay Hack  
Margaret and James Hackstedde  
Pat Hall  
Mai and Paul Halpert  
Courtney Hamilton  
Jane and James Hamilton  
Shelly Hampton  
Hanan Cosmetics  
Eric Hannon  
Hanson/Renaissance Court Reporters  
Laurie and Bruce Harms  
Gail Harper  
Sheila Harris  
Harry Slatkin Builders  
Richard Hartle  
Susan and Craig Hartrick  
Donald J Hawkins  
Matt Hawkins  
Pamela Hawkins  
Kathleen and Oliver Hazimeh  
Dara Headrick  
Joyce Heid  
Mary and Brian Hein  
Ewa and Michael Hepner  
Jan and Dr Harry Herkowitz  
Doreen Hermelin  
Hersh's  
Hewlett Packard  
Hidden Peace  
Tracie Hightower  
Betty and William Hill  
Teena S Hill  
Hillel Day School  
Hillside Farm LLC  
Pam Hoelscher  
Tracy Hoffman  
Dorothea Holden  
Honey Baked Ham  
Villa and Jerome Huddleston  
Brandi Hughes  
Diane and James Hults  
IKON  
Valerie Indenbaum  
Infocus Research Group

Rachel Ann and Gerald Ingber  
 Shirlee and J George Ingber  
 International Diamond Importers  
 Investment Management Systems  
 Monique Irby  
 Dana and David Jacob  
 Katherine and Steven Jacob  
 Ellen Jacobowitz  
 Debra and Frederick Jacobs  
 Gilda and John Jacobs  
 Jain Temple  
 Emery James  
 James B Oswald Companies  
 Japanese School of Detroit  
 Michelle Jarczewski  
 Jax Kar Wash  
 Erika Jefferson  
 Danielle Johnson  
 Miki Johnson  
 Afrisia Jones  
 J B and A M Jones  
 Scott Jones  
 Jones Lang LaSalle  
 Doris Jordan-Smith  
 Jump Start Automotive Group  
 Drs Joyce and Anthony Kales  
 Helen Kales and Patrick Gibson  
 Susan and Jay Kalisky  
 Nancy and Mitchell Kantor  
 Gail and Robert Kaplan  
 Helen Kaplan  
 Emile and Jack Kashtan  
 Judith and Clifford Kashtan  
 Helen and Martin Katz  
 Sue and Alan Kaufman  
 Diane and Irving Keene  
 Michael Kell  
 Annette Kelter  
 Kemerko Realty LLC  
 Fern and Brian Kepes  
 Peggy Kerr and Tim Travis  
 Rita Kerr  
 David Kigmer  
 Lisa Killingsworth  
 Emily Kimbrough  
 Kiwanis Foundation of Dearborn  
 Ira Klein  
 Kelly and Kevin Knecht  
 Anna Konigsberg  
 Lois Konjarevich  
 Crystal and Brian Korpi  
 Lamya Kory  
 Carnie and Eric Kovan

Bonnie Kowalsky  
 Louise Kozlowski  
 Jackie and Lawrence Kraft  
 Zina and Michael Kramer  
 Brian Krasicky  
 Sarah and Dr Neal Krasnick  
 Katherine Kreutz  
 Tom Krolicki  
 Hilda Kuebler  
 Elizabeth Kurnetz and James Stahl  
 Barbara Kux  
 La Casa de La Habana  
 Rita, Joyce and Dr Myron LaBan  
 Judith Ann LaBret  
 David Laity  
 Kathy LaPine  
 Almut and Michael Lapp  
 Shannon Laskey  
 Christine Lauderbach  
 Jeffrey Lauster  
 Carol Lavoie  
 Karen Lawson  
 Lawsuit Financial Corp  
 Hazel Layne  
 Richard Leebove  
 Susan and Scott Leemaster  
 Deborah Leich  
 Suzanne and Eugene Leich  
 Kathryn and Richard Lenter  
 Margo and Kira Lesser  
 Susan and Kenneth Lesson  
 Levi Strauss Foundation  
 H Barry Levine  
 Robin Levine  
 Risa and Dr Jay Levinson  
 Linda and Edward Levy Jr  
 Marianne Lewins  
 Jennifer and Steven Lewis  
 Rena and Mark Lewis  
 Joseph Lezotte  
 Nicole Lieber  
 Life Time Fitness Foundation  
 Lisa and Hannan Lis  
 Darlene and Victor Liss  
 Mary Ann and Mike Liut  
 Mark Lockridge  
 Deborah Logan  
 Lisa London  
 Lone Pine Elementary  
 Meredith and R Alexander Lovell  
 Sheldon Lublin  
 Tammy Lundstrum MD  
 Mary Mach

Mary and Brian Macias  
 Stephen MacKellar  
 Madison Bleu  
 Dorothy and Dr Murray Mahlin  
 Farah and Hassan Makki  
 Shirley Malkewiel  
 Linda Marinovich  
 Mariomax  
 Cynthia Maritato  
 Marilyn Markel  
 Kimberly and Norman Markowitz  
 Carol Marsh  
 Martec Group  
 Matt Prentice Restaurant Group  
 Lisa Matthews  
 Mattress Liquidators  
 Barbara and John Mayer  
 Herman McCall  
 Teresa A McCardell  
 Diane McElhinney  
 Kristyn McGlynn  
 Jennifer and John McManus  
 Heather McMaster  
 MedQuest Ltd  
 Elizabeth and Frederick Mehl  
 David Mehram  
 Valerie Merriwether  
 Metaldyne  
 Debra and Maynard Metler  
 MGM Grand Detroit Casino  
 Lisa Micheletto  
 Joan and Anthony Mignano  
 Barbara Mikulski  
 Caroline and William Miller  
 Recalia Miller  
 Shelley Miller  
 Milton and Lois Zussman  
 Philanthropic Fund  
 Esther and Marvin Mintz  
 Kaylin Mitchell  
 Judge Susan Moiseev  
 Marla and Andrew Moiseev  
 Rhonda and Joe Monro  
 Alison Montgomery-Littlejohn  
 Nancy and Barry Moore  
 Tracie Moore  
 Claudia Morcom  
 Stephan Morgan  
 Sylvia Morin  
 Nicole Morof  
 Mort Meisner Associates  
 Robin and Mike Moscow  
 Tina Moss



# Our Giving Tree

Sarah and Brett Mountain  
Patricia and John Mucha  
Muchmore Harrington Smalley  
and Associates  
John Murphy  
Sherry Myers  
Janisse Nagel  
John Naglick  
Ratna and Vaman Naik  
Lea and William Narens  
Linda and Tom Nathan  
Neiman Marcus  
Alicia and David Nelson  
Network Group Services  
Jody and Ron Neuger  
Ashley Newman  
Wendy Newman  
Tara Nodland  
Margaret Nouhan  
Morton Noveck  
Jo Ellen and George Nyman  
Oakland County Board  
of Commissioners  
Margie and William Oberfelder  
Tom and Theresa O'Dea  
Amy and Dr Stephen Olson  
Joyce and Eric Olson  
Harriet and Gregg Orley  
Robert Ostrosky  
David Palmer  
Christine Sage Pancotto  
Ann Parent  
Park West Gallery  
Linda and Joe Parkhurst  
Lakshmi Paruchuri  
Geraldine and Abraham Pasternak  
Roberta Patt  
Maureen Patterson  
Lauren Peabody  
Peace Lutheran Church  
Lynn and Willie Pearson  
Priscilla Perkins  
Laura and Brian Petterle  
Patrice and Dr Eric Phillips  
Rose and Antonio Picciuca  
Melanie and Richard Picel-Bell  
Pier 3  
Chitra Pinjarkar  
Pinnacle Printing  
Dina and Dr Barry Pinsky  
Piston's Palace Foundation  
Pitt Child Development Center/  
Jewish Community Center

PK Contracting  
Ann and Arpad Pogany  
Jane and Jesse Polan  
Cathy and Bernie Polen  
L T Porte  
Janet Pound  
Maxine Powell  
Sabeena and Kamal Pradhan  
Meyer and Anna Prentis Family  
Foundation  
Renee Prewitt  
Margaret and Mike Price  
Natalie Proctor  
Jackie Proffitt  
Project Night Night  
Promotions Unlimited 2000  
PRP Wine International  
Quarton Elementary  
R S Electronics  
Rick Rachner  
Cathy Ellen Radner  
Cheryl and Dr Ronald Jay Rasansky  
Lisa Rastigue  
Judy and Dr Frank Rastigue  
REDICO  
Brianna Regan  
Ann and Rick Reinman  
Mary and Gretchen Reitz  
REM Marketing Group  
Mary Renaud  
Donna and Scott Ringler  
Geri and Gordon Rinschler  
Pearl and Robert Rissman  
RL Communications  
Jimmy Roberts  
Judith Robinson and Robert George  
Robinson, Pietras, Kalisky & Co., PC  
Rock and Roll Hall of Fame Museum  
Marjorie Rose  
Pat and Barry Rosen  
Ronna Rosen  
Matt Rosenbaum  
Michael Rosenbaum  
Michelle Rosenfeld  
Charlotte H Rosenthal  
Rose's Family Dining  
Rita and Charles Rossi  
Harold Rothenberg  
Lisa and Steven Rotter  
Beatrice and Seymour Rowe  
Shoshana Rubenstein  
Dale and Jerrold Rubin  
Jill and Robert Rubin

Jorin and Eugene Rubin  
Leslie and Alan Ruby  
Ruby's Balm  
Dorothy Rupp  
Karen and Todd Sachse  
Lori Sadek  
Robert Sage  
Sales Marketing Group (SMG)  
Miriam Sandweiss  
Sally and Charles Sarin  
Maureen Saur  
SBL Investment Group LLC  
Suzanne and Harvey Schatz  
Bette and Herb Schein  
Schein and Company  
Julie and Dr Warren Schlanger  
Denise Schmerin  
Schoolhouse Montessori  
Anita Regaldo and Daniel Schottenfels  
Jody Schottenfels  
Sally B Schottenfels  
James Schubargo  
Schuler's Restaurant and Pub  
Marsha and Jack Schulman  
Pascelle and Perry Schulman  
John Schultz  
Audrey and Leon Schurgin  
Lenore and Robert Schwartz  
Sandra and Alan Schwartz  
Belinda Scott  
Aimie Seals  
Carol Secreto  
Mechelle and Taylor Segue  
Wendy and Benjamin Seller  
Elaine and Michael Serling  
Serra Automotive  
Lisa Shaheen  
Kristen Shannon  
Jeanne O Shapira  
Nancy and Barry Shapiro  
Elayne Sharon  
Neran Shaya  
Mary Ann and Bill Shea  
Shaneeka Sheffey  
Matthew Sheperd  
Alana and Mike Sherman  
Elizabeth and Kenneth Shluger  
Jeffrey Shulak  
Abbie Shuman  
Jennifer and Brian Siegel  
Lori and Dr Marc Siegel  
Sigma Gamma Rho Sorority, Inc.  
Silvique

Sara, Drew and Scott Simon  
 Rudy Simons  
 Simons Investment Company  
 Amy and Craig Singer  
 Margaret Singleton  
 Bernard J Sivak MD  
 Jeffrey Slatkin  
 Robert Sloan  
 Jon Smalley  
 Jacquelyn Smith  
 Pam Smith  
 Stacy Lake Smith  
 Tim Smith  
 Gail and Bruce Smoler  
 Stacey and Jason Soffa  
 Leslie and Neil Soifer  
 Lori and Doug Soifer  
 Shirley Soifer  
 Sidney Soifer MD  
 Paul Solomon  
 Norman Sommers  
 Southwest Detroit  
 Development Collaborative  
 Barbara and Andrew Spiro  
 Michelle and Julius Spognardi  
 St. Patrick's Senior Center  
 Stage Deli Catering  
 Randy Dean and Sam Stahl  
 Staples  
 Starr Commonwealth Detroit  
 StarrVista Inc  
 Jacquelyn and John Stassinopoulos  
 Carly Steinberg  
 Deborah and John Steinberg  
 Florence Steinberg  
 Rosemary and Donald Stemmermann  
 Teresa and Martin Stephens  
 Julie and William Stern  
 Steven Bernard Jewelers Ltd  
 Signa and Martin Stewart  
 Dawn Stokes  
 Martina Stone  
 Ann and Robert Strebler  
 Barbara and Sydney Stutz  
 Kavitha Subramani  
 Sundance Shoes  
 Kathleen Surma  
 Beth and Scott Sutherland  
 Beth Sutherland  
 Caroline Sutherland  
 Leslie and Daniel Swanson  
 Sweet Lorraines Café Bar

April Swint  
 Gwendolyn and Willie Tabb  
 Audrey Takacs  
 Jack Tallerico  
 Tamara Robinson  
 Target  
 Tarnoff Family Foundation  
 Shelby Tauber  
 Ellen and William S Taubman  
 Howard Taxe  
 Patti Taxe  
 Frank Taylor  
 Julie and Mark Teicher  
 Telcom Credit Union  
 Temple Emanu-El Early  
 Childhood Community  
 Temple Israel  
 The Optimist Club of Lathrup  
 and Southfield  
 Robert Thero  
 Mary and Henry Thoma Jr  
 Stacy Thompson  
 Jill and Michael Thomson  
 Sarah Thurswell  
 Mary and Mark Thut  
 Ruth Podolsky Tobias  
 Carolyn Tocco  
 Todd's Room  
 Mary Ellen Tonis  
 Avis and Joseph Toochin  
 Total Benefit Systems  
 Touch of Lace  
 Town Tavern  
 Townsend Hotel  
 Floyd Tucker Jr  
 Marsha and Arnold Tucker  
 Delphine and Leon Tupper  
 Julie Turnquist  
 Denel Tuszynski  
 Adam Tweadey  
 United Way for Southeastern Michigan  
 Marianne and Frank Vanwulfen  
 Ashley Vaughn  
 Jackie Verevich  
 Marilyn and Steven Victor  
 Vintage Village  
 Vintner's Cellar of Royal Oak  
 Christine Voss  
 Sandy Wagner  
 Betsy and Thomas Walbridge Jr  
 Charlotte and Fred Walkee  
 Lorraine and James Walsh

Lisa Washington  
 Jill Foss Watson  
 Ann Weber  
 Laurie and Howard Weinberger  
 A J Weiner  
 Mrs Lawrence M Weiner  
 Sheldon P Weinstein  
 Idell and Lawrence Weisberg  
 Karen and Robert Weisberg  
 Sally Weisman  
 Maria and Sean West  
 West Maple Elementary School  
 Laurie and Robert Wethington  
 Wilberding  
 Kimberly Wilder  
 Paul Williams  
 Rebecca Williams  
 Shaleta Williams  
 Annette Wilson  
 Erik Wilson  
 Tameka Wilson  
 Isadore and Beryl  
 Winkelman Foundation  
 Rita and Laurence Winokur  
 Gerald Witalec  
 Rachel and Peter Woll  
 Judith and Robert Wollack  
 Paulette and Leonard Woodside  
 Murray Woolf  
 Joann and David Wozniak  
 Dana Wright  
 Susan and Eric Wydra  
 Wylie E Groves High School  
 Tou Foy Yang  
 Marla and Brian Young  
 Zieben Mare  
 Zoom DeSign  
 Marsha and Leonard Zucker  
 Julie and Richard Zussman

## BOARD ROSTER

Carol Klein, Chairperson  
David Kramer, Vice Chair  
Dianna Ronan, Secretary  
Steven Schwartz, Treasurer  
Michael Adkins  
Drew Besonson  
Shirley Bryant  
Allen Einstein  
Adam Forman  
Natalie Glass  
Barbara Goldberg  
Margo Gorchow  
Maura Jung, Ed.D  
Randie Levin  
Loretta Polish, Ph.D.  
Michael Quinn  
Sally Schottenfels  
Taylor Segue  
Dennis Sheridan  
Adrian Tonon

## ADVISORY BOARD

Sonya Delley  
George Fox  
Stephanie Grimes-Washington  
Paul Jenkins Jr  
Emmett Moten  
Frank Stella

## EXECUTIVE STAFF

Michael E Williams, President & CEO  
Carmine DeVivo, COO  
Robert Blumenfeld, SVP Finance & Development  
Trudy Fortino, VP Placement Services

## LOCATIONS

### Genesee County

225 E Fifth Street, Suite 109  
Flint, MI 48502  
810.239.3264

### Macomb County

42140 Van Dyke Road, Suite 206  
Sterling Heights, MI 48314  
586.997.3886

### Oakland County

30215 Southfield Road  
Southfield, MI 48076  
248.258.0440

### Washtenaw County

2797 Oak Valley Drive  
Ann Arbor, MI 48103  
734.846.3722

### Wayne County

18100 Meyers  
Detroit, MI 48235  
313.340.0497

